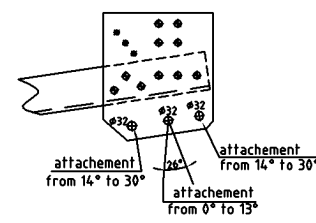


The diagram illustrates a transmission tower with the following labeled components:

- P.4415**: Top cross arm
- P.4416**: Second cross arm from top
- P.4417**: Third cross arm from top
- P.4418**: Fourth cross arm from top
- P.4419**: Fifth cross arm from top
- P.4420**: Sixth cross arm from top
- P.4421**: Seventh cross arm from top
- P.4422**: Eighth cross arm from top
- P.4423**: Ninth cross arm from top
- P.4424**: Tenth cross arm from top
- P.4425**: Eleventh cross arm from top
- P.4426**: Twelfth cross arm from top
- P.4427**: Thirteenth cross arm from top
- P.4428**: Fourteenth cross arm from top
- P.4429**: Fifteenth cross arm from top
- P.4430**: Sixteenth cross arm from top
- P.4431**: Seventeenth cross arm from top
- P.4432**: Eighteenth cross arm from top
- P.4433**: Nineteenth cross arm from top
- P.4434**: Twentieth cross arm from top
- P.4435**: Twenty-first cross arm from top
- P.4436**: Twenty-second cross arm from top
- P.4437**: Twenty-third cross arm from top
- P.4438**: Twenty-fourth cross arm from top
- P.4439**: Twenty-fifth cross arm from top
- P.4440**: Twenty-sixth cross arm from top
- P.4441**: Twenty-seventh cross arm from top
- P.4442**: Twenty-eighth cross arm from top
- P.4443**: Twenty-ninth cross arm from top
- P.4444**: Thirtieth cross arm from top
- P.4445**: Thirty-first cross arm from top
- P.4446**: Thirty-second cross arm from top
- P.4447**: Thirty-third cross arm from top
- P.4448**: Thirty-fourth cross arm from top
- P.4449**: Thirty-fifth cross arm from top
- P.4450**: Thirty-sixth cross arm from top
- P.4451**: Thirty-seventh cross arm from top
- P.4452**: Thirty-eighth cross arm from top
- P.4453**: Thirty-ninth cross arm from top
- P.4454**: Fortieth cross arm from top
- P.4455**: Forty-first cross arm from top
- P.4456**: Forty-second cross arm from top
- P.4457**: Forty-third cross arm from top
- P.4458**: Forty-fourth cross arm from top
- P.4459**: Forty-fifth cross arm from top
- P.4460**: Forty-sixth cross arm from top
- P.4461**: Forty-seventh cross arm from top
- P.4462**: Forty-eighth cross arm from top
- P.4463**: Forty-ninth cross arm from top
- P.4464**: Fiftieth cross arm from top
- P.4465**: Fifty-first cross arm from top
- P.4466**: Fifty-second cross arm from top
- P.4467**: Fifty-third cross arm from top
- P.4468**: Fifty-fourth cross arm from top
- P.4469**: Fifty-fifth cross arm from top
- P.4470**: Fifty-sixth cross arm from top
- P.4471**: Fifty-seventh cross arm from top
- P.4472**: Fifty-eighth cross arm from top
- P.4473**: Fifty-ninth cross arm from top
- P.4474**: Sixtieth cross arm from top
- P.4475**: Sixty-first cross arm from top
- P.4476**: Sixty-second cross arm from top
- P.4477**: Sixty-third cross arm from top
- P.4478**: Sixty-fourth cross arm from top
- P.4479**: Sixty-fifth cross arm from top
- P.4480**: Sixty-sixth cross arm from top
- P.4481**: Sixty-seventh cross arm from top
- P.4482**: Sixty-eighth cross arm from top
- P.4483**: Sixty-ninth cross arm from top
- P.4484**: Seventieth cross arm from top
- P.4485**: Seventy-first cross arm from top
- P.4486**: Seventy-second cross arm from top
- P.4487**: Seventy-third cross arm from top
- P.4488**: Seventy-fourth cross arm from top
- P.4489**: Seventy-fifth cross arm from top
- P.4490**: Seventy-sixth cross arm from top
- P.4491**: Seventy-seventh cross arm from top
- P.4492**: Seventy-eighth cross arm from top
- P.4493**: Seventy-ninth cross arm from top
- P.4494**: Eightieth cross arm from top
- P.4495**: Eighty-first cross arm from top
- P.4496**: Eighty-second cross arm from top
- P.4497**: Eighty-third cross arm from top
- P.4498**: Eighty-fourth cross arm from top
- P.4499**: Eighty-fifth cross arm from top
- P.4500**: Eighty-sixth cross arm from top
- P.4501**: Eighty-seventh cross arm from top
- P.4502**: Eighty-eighth cross arm from top
- P.4503**: Eighty-ninth cross arm from top
- P.4504**: Ninetieth cross arm from top
- P.4505**: Ninety-first cross arm from top
- P.4506**: Ninety-second cross arm from top
- P.4507**: Ninety-third cross arm from top
- P.4508**: Ninety-fourth cross arm from top
- P.4509**: Ninety-fifth cross arm from top
- P.4510**: Ninety-sixth cross arm from top
- P.4511**: Ninety-seventh cross arm from top
- P.4512**: Ninety-eighth cross arm from top
- P.4513**: Ninety-ninth cross arm from top
- P.4514**: One hundred cross arm from top
- P.4515**: One hundred and first cross arm from top
- P.4516**: One hundred and second cross arm from top
- P.4517**: One hundred and third cross arm from top
- P.4518**: One hundred and fourth cross arm from top
- P.4519**: One hundred and fifth cross arm from top
- P.4520**: One hundred and sixth cross arm from top
- P.4521**: One hundred and seventh cross arm from top
- P.4522**: One hundred and eighth cross arm from top
- P.4523**: One hundred and ninth cross arm from top
- P.4524**: One hundred and tenth cross arm from top
- P.4525**: One hundred and eleventh cross arm from top
- P.4526**: One hundred and twelfth cross arm from top
- P.4527**: One hundred and thirteenth cross arm from top
- P.4528**: One hundred and fourteenth cross arm from top
- P.4529**: One hundred and fifteenth cross arm from top
- P.4530**: One hundred and sixteenth cross arm from top
- P.4531**: One hundred and seventeenth cross arm from top
- P.4532**: One hundred and eighteenth cross arm from top
- P.4533**: One hundred and nineteenth cross arm from top
- P.4534**: One hundred and twentieth cross arm from top
- P.4535**: One hundred and twenty-first cross arm from top
- P.4536**: One hundred and twenty-second cross arm from top
- P.4537**: One hundred and twenty-third cross arm from top
- P.4538**: One hundred and twenty-fourth cross arm from top
- P.4539**: One hundred and twenty-fifth cross arm from top
- P.4540**: One hundred and twenty-sixth cross arm from top
- P.4541**: One hundred and twenty-seventh cross arm from top
- P.4542**: One hundred and twenty-eighth cross arm from top
- P.4543**: One hundred and twenty-ninth cross arm from top
- P.4544**: One hundred and thirtieth cross arm from top
- P.4545**: One hundred and thirty-first cross arm from top
- P.4546**: One hundred and thirty-second cross arm from top
- P.4547**: One hundred and thirty-third cross arm from top
- P.4548**: One hundred and thirty-fourth cross arm from top
- P.4549**: One hundred and thirty-fifth cross arm from top
- P.4550**: One hundred and thirty-sixth cross arm from top
- P.4551**: One hundred and thirty-seventh cross arm from top
- P.4552**: One hundred and thirty-eighth cross arm from top
- P.4553**: One hundred and thirty-ninth cross arm from top
- P.4554**: One hundred and fortieth cross arm from top
- P.4555**: One hundred and forty-first cross arm from top
- P.4556**: One hundred and forty-second cross arm from top
- P.4557**: One hundred and forty-third cross arm from top
- P.4558**: One hundred and forty-fourth cross arm from top
- P.4559**: One hundred and forty-fifth cross arm from top
- P.4560**: One hundred and forty-sixth cross arm from top
- P.4561**: One hundred and forty-seventh cross arm from top
- P.4562**: One hundred and forty-eighth cross arm from top
- P.4563**: One hundred and forty-ninth cross arm from top
- P.4564**: One hundred and fiftieth cross arm from top
- P.4565**: One hundred and fifty-first cross arm from top
- P.4566**: One hundred and fifty-second cross arm from top
- P.4567**: One hundred and fifty-third cross arm from top
- P.4568**: One hundred and fifty-fourth cross arm from top
- P.4569**: One hundred and fifty-fifth cross arm from top
- P.4570**: One hundred and fifty-sixth cross arm from top
- P.4571**: One hundred and fifty-seventh cross arm from top
- P.4572**: One hundred and fifty-eighth cross arm from top
- P.4573**: One hundred and fifty-ninth cross arm from top
- P.4574**: One hundred and sixtieth cross arm from top
- P.4575**: One hundred and sixty-first cross arm from top
- P.4576**: One hundred and sixty-second cross arm from top
- P.4577**: One hundred and sixty-third cross arm from top
- P.4578**: One hundred and sixty-fourth cross arm from top
- P.4579**: One hundred and sixty-fifth cross arm from top
- P.4580**: One hundred and sixty-sixth cross arm from top
- P.4581**: One hundred and sixty-seventh cross arm from top
- P.4582**: One hundred and sixty-eighth cross arm from top
- P.4583**: One hundred and sixty-ninth cross arm from top
- P.4584**: One hundred and seventieth cross arm from top
-

[illegible]

NOTES:

- _HOT DIP GALVANIZED
- _H HIGH TENSILE STEEL, _M MILD STEEL
- ALL ROLES AS FAR AS NOT BEING EXACTLY DIMENSIONED
- ALL BOLTS TO BE HIGH TENSILE STEEL.
- NUTS, WASHERS OF MILD STEEL
- KL AND HL - COLD ROLL FORMED SECTIONS
- _N NOT ROLLED SECTIONS

NOTES

1. For general notes see drawing P.AA-05.
2. For bolt part see drawing P.AA-02 - P.AA-05.
3. For ball nut part see drawing P.AA-06 - P.AA-08.
4. $\phi 15$ mm dia bolts for 20mm dia ball nuts edge 25 mm wide
5. $\phi 215$ mm dia bolts for 20mm dia balls, cut edge 39 mm wide
6. $\phi 215$ mm dia bolts for 20mm dia balls/cut edge 44 mm wide